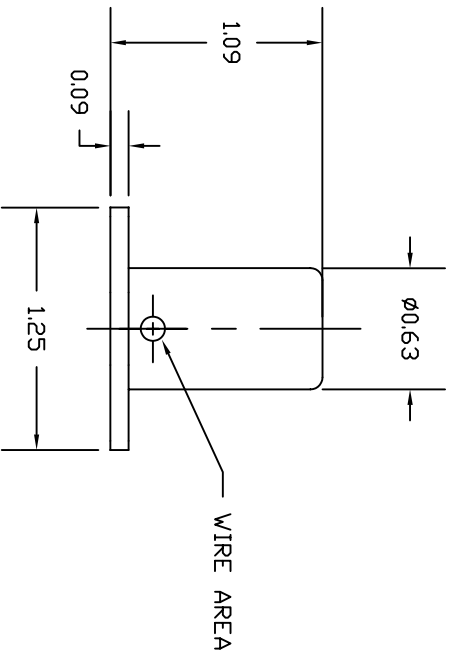
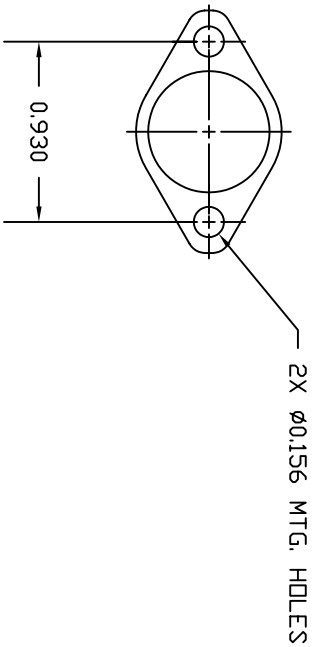
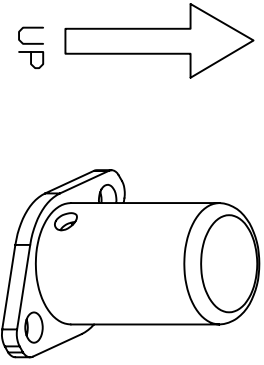


SPECIFICATIONS	
SENSITIVITY	RADIAL (PLANAR)
ACCELERATION THRESHOLD	5 TD 7G/S
ENVIRONMENTAL	HERMETICALLY SEALED 1X10-6 cc/sec
CONTACTS	S.P.S.T. N.D. MOMENTARY
CONTACT RATING	2 AMPS
CONTACT RESISTANCE	LESS THAN 10 OHMS @ 10 mA
INSULATION RESISTANCE	100 MEGOHMS MIN @ 500 VDC
TERMINATION	2 CONDUCTOR 24 AVG BRAID SHIELD CABLE
WEIGHT	25 GRAMS MAX

MOUNTING:  
 PLACE UNIT ON FLAT RIGID SURFACE IN  
 VEHICLE. SENSOR CAN BE ROTATED IN ANY  
 DIRECTION AS LONG AS THE BODY IS FACING  
 UP.



## CRASH DETECTOR

UNLESS OTHERWISE SPECIFIED:  
 BREAK ALL SHARP EDGES .010" X 45°  
 #64 MACHINE FINISH.  
 ALL DIMS. TO BE MET AFTER PLATING.  
 DIMENSIONS ARE IN INCHES.  
 TOLERANCES: XX ±.010  
 DEC ±.005  
 FRAC ± 1/64  
 ANG ± .005  
 DIA CONC ± .005

TTT OUTLINE MODEL 4RO-922

MATERIAL

FINISH

HEAT TREAT

SCALE

DWG NO.

INERTIA  
 SWITCH INC.  
 ORANGEBURG, N.Y.

REV	DESCRIPTION	DATE	CO. NO.	CHK'D
A	24 AWG CABLE WAS 22 AWG WIRE LEADS	9/7/05	23934	ATS

USED ON	NEXT ASSEM.	QTY
4RO-922		

DWNL	CHK'D	APPR'VD
ATS	BD	BD 01

REV
A