

SPECIFICATIONS	
SENSITIVITY	UNIDIRECTIONAL
ACCELERATION THRESHOLD	2.0 G'S, ±10%
CONTACTS	S.P.S.T. N.O.
CONTACT RATING	2 AMPS
CONTACT RESISTANCE	LESS THAN 0.5 OHMS @ 10 mA
INSULATION RESISTANCE	100 MEGOHMS MIN @ 500 VDC
WEIGHT	175 GRAMS MAX

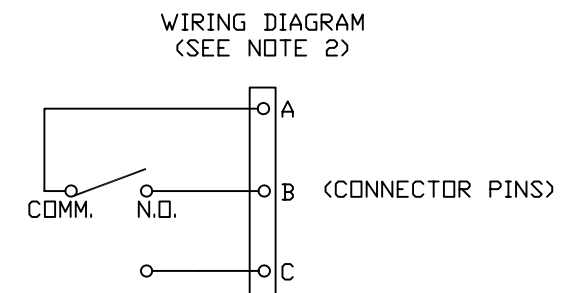
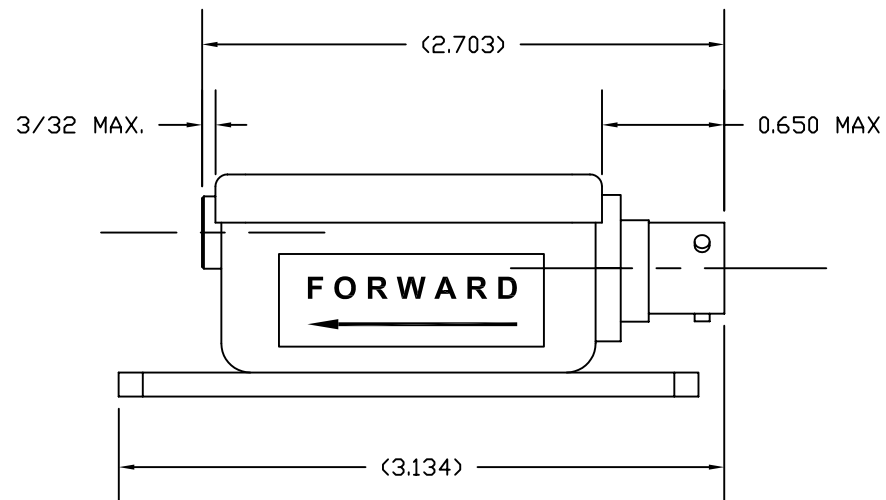
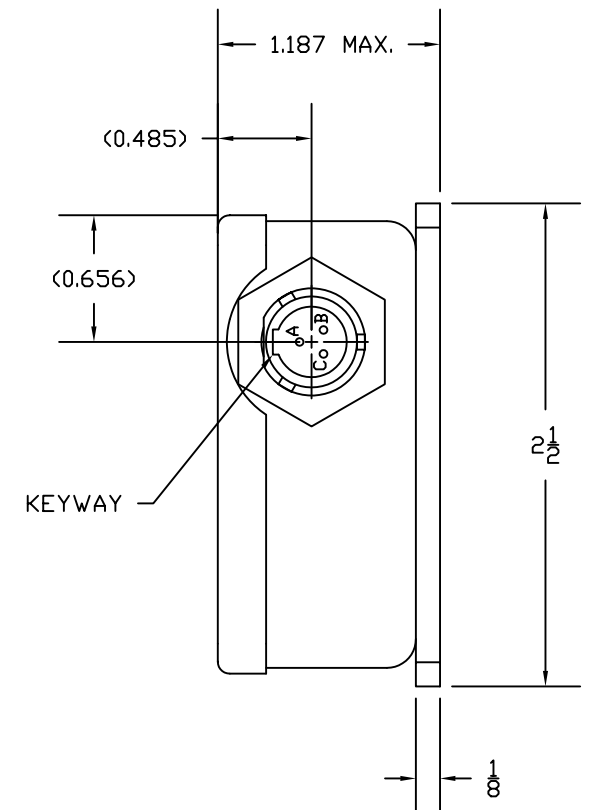
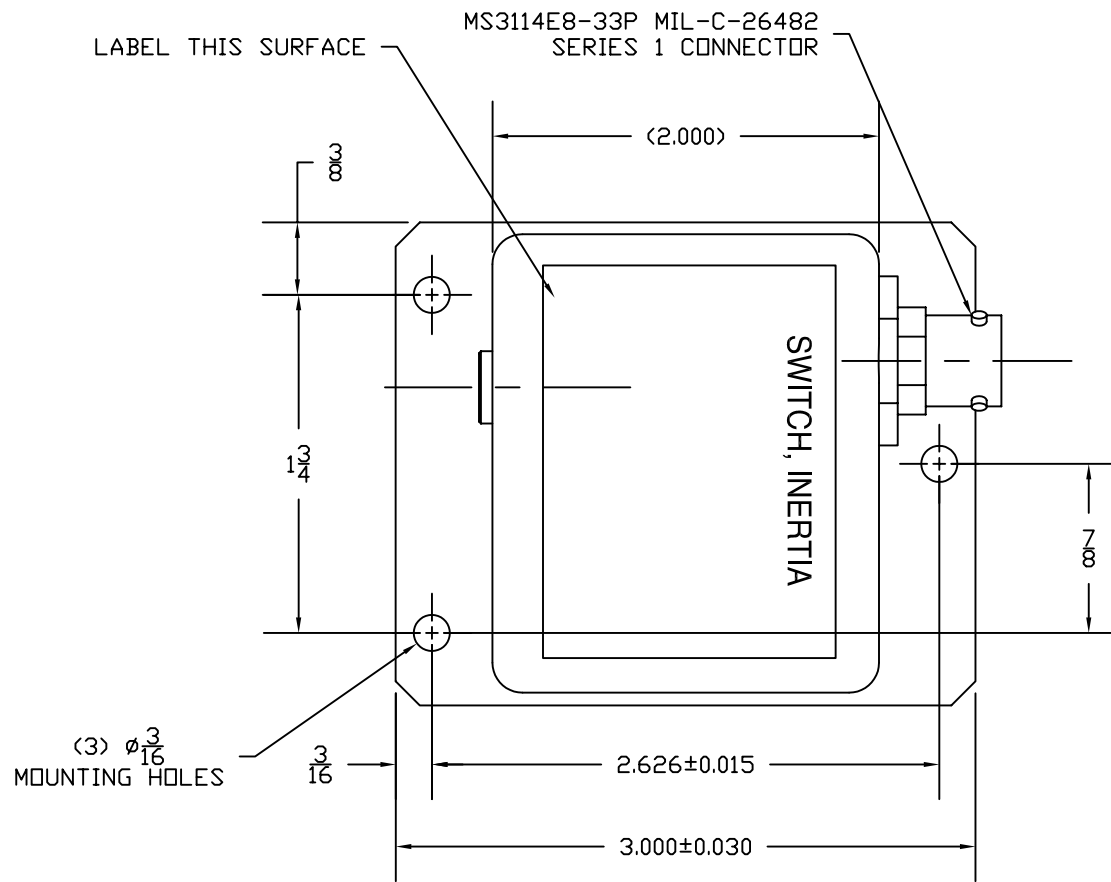
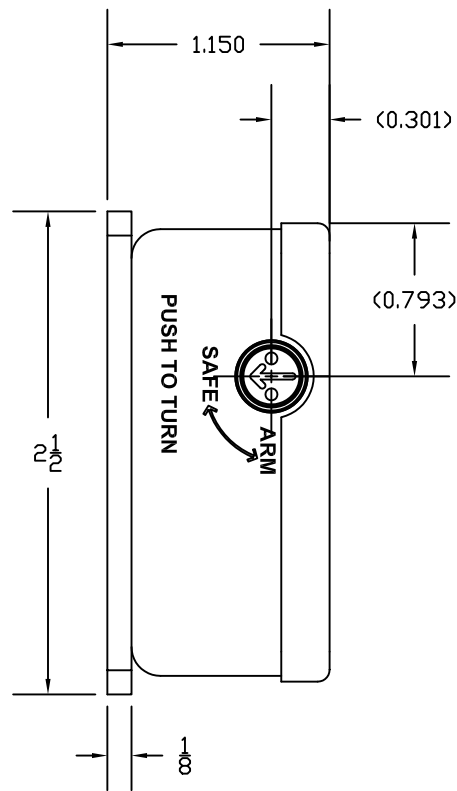


FIGURE 1

SWITCH, INERTIA
 I.S. P/N: 6U0-924
 VEND. P/N:
 ACC.
 SER. XXXXX
INERTIA SWITCH, Inc.
 ORANBURG, N.Y.
 U.S. PATS. ISSUED & PENDING

THIS DOCUMENT CONTAINS PROPRIETARY INFORMATION SUBMITTED IN CONFIDENCE AND SHALL NOT BE REPRODUCED IN WHOLE OR IN PART WITHOUT THE PRIOR WRITTEN CONSENT OF INERTIA SWITCH INC.

UNLESS OTHERWISE SPECIFIED:
 BREAK ALL SHARP EDGES .010" X 45°
 #64 MACHINE FINISH.
 ALL DIMS. TO BE MET AFTER PLATING.
 DIMENSIONS ARE IN INCHES.
 TOLERANCES:
 DEC .XX ±.010
 DEC .XXX ±.005
 FRAC ± 1/64
 ANG ± 1°
 DIA CONC ± .005

TITLE OUTLINE MODEL 6U0-924
 MATERIAL
 FINISH

INERTIA SWITCH INC.
 ORANBURG, N.Y.

REV	DESCRIPTION	DATE	CO. NO.	CHK'D	USED ON	NEXT ASSEM.	QTY	HEAT TREAT	SCALE	DWG NO.	REV
					6U0-924		1		1:1	B16902	
REVISIONS					APPROV'D	CHK'D	DATE				
					ATS	BD	4/9/02				