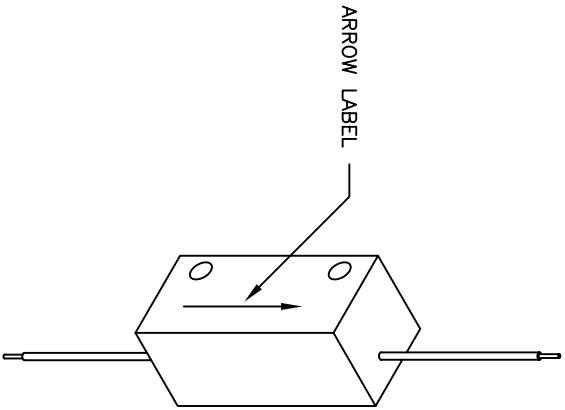
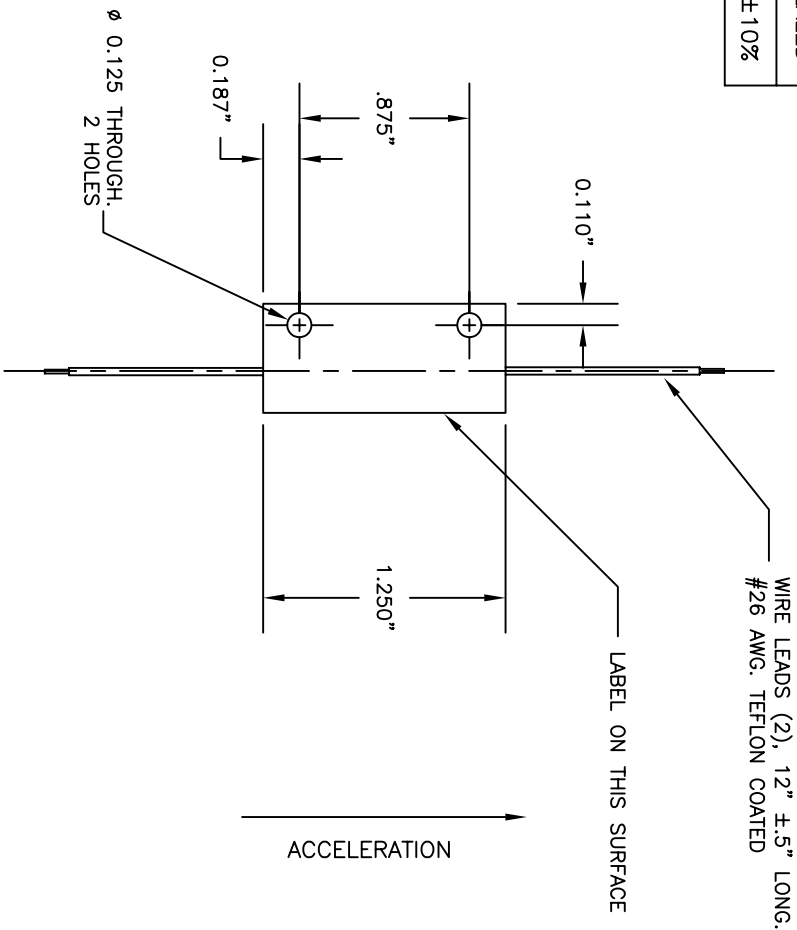
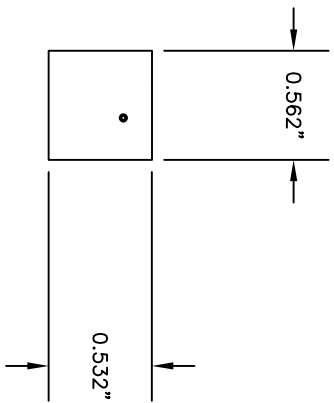


SPECIFICATIONS	
SENSITIVITY	UNIDIRECTIONAL
CONTACT RESISTANCE	LESS THAN 0.5 OHMS
INSULATION RESISTANCE	500 MEGS MIN @ 500 V.D.C.
CONTACT RATING	3 WATTS MAX.
TEMP. OPERERATING	-65°F TO +250°F
RESET TYPE	AUTOMATIC, BEFORE 1.1 G
CONSTRUCTION	EPOXY SEALED
ACCELERATION	STANDARD RANGE 1.5 - 2.5 G'S ±10%



NOTE: MOUNT UNIT WITH ARROW FACING UPWARD.



TITLE		OUTLINE MODEL 6UO-894	
MATERIAL			
FINISH			
HEAT TREAT			
DWG. A.W.	CHK'D B.D.	SCALE 1:1	DWG NO. A15991
UNLESS OTHERWISE SPECIFIED: BREAK ALL SHARP EDGES .010" X 45° ALL DIMS. TO BE MET AFTER PLATING. DIMENSIONS ARE IN INCHES TOLERANCES: DEC .XX ±.010 DEC .XXX ±.005 FRAC ± 1/64 ANG ± .005 DIA CONC ± .005		USED ON 6UO-894	NEXT ASSEM.
REV		DESCRIPTION	DATE
CO. NO.		CHK'D	
INERTIA SWITCH INC. W. NYACK, N.Y.			