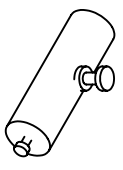
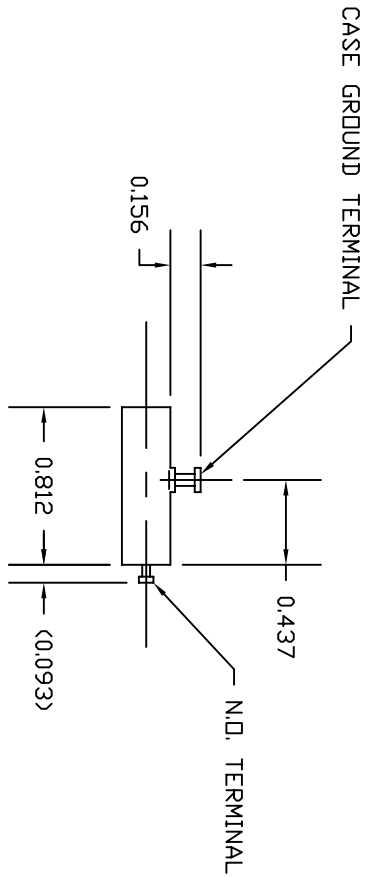
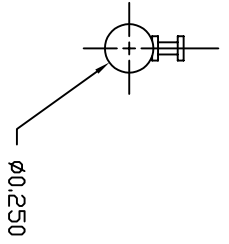


SPECIFICATIONS	
SENSITIVITY	UNIDIRECTIONAL
G LEVEL	10 TD 2000 G'S ±10%
CONTACTS	S.P.S.T. N.D.
INSULATION RESISTANCE	1000 MEGOHMS @ 500 VDC
CONTACT RATING	2 A, 28 VDC
RESPONSE TIME	LESS THAN 20 mS
TEMPERATURE	-55 °C TD +125 °C
TERMINATION	PLATED TERMINALS OR WIRE LEADS



UNLESS OTHERWISE SPECIFIED:
 BREAK ALL SHARP EDGES .010" X 45°
 #64 MACHINE FINISH.
 ALL DIMS. TO BE MET AFTER PLATING.
 DIMENSIONS ARE IN INCHES.
 TOLERANCES:
 DEC .XX ±.010
 DEC .XXX ±.005
 FRAC ± 1/64
 ANG ± .005
 DIA CONC ± .005

A	REDRAWN	8/16/99	23602	BD
REV	DESCRIPTION	DATE	CO. NO.	CHK'D
	REVISIONS			

USED ON	6U0-200
NEXT ASSEM.	
QTY	1

TITLE	OUTLINE MODEL 6U0-200
MATERIAL	
FINISH	
HEAT TREAT	
DWN.	ATS
CHK'D	BD
SCALE	1:1
APPR'D	MF 5/4/94

DWG NO.	A11902
REV	A

INERTIA
 SWITCH INC.
 ORANGEBURG, N.Y.