

SPECIFICATIONS	
SENSITIVITY	OMNIDIRECTIONAL
RANGE	3 TD 100 G'S
ACCURACY	±15%
CONTACTS	S.P.S.T. N.O. MOMENTARY
CONTACT RATING	2 AMPS @ 24 VDC
CONTACT RESISTANCE	LESS THAN 1.0 OHMS
ENVIRONMENTAL	MIL-STD-810
RESET	AUTOMATIC ONCE G'S DECAY
INSULATION RESISTANCE	1000 MEGOHMS MIN @ 500 VDC
DAMPING	UNDAMPED (DAMPED SPECIAL)
SHOCK	100 G'S, 11 MS, 1/2 SINE WAVE
OPERATING TEMPERATURE	-55° C TD +125° C
TERMINATION	SHIELDED CABLE
VIBRATION	UNDAMPED - NO CLOSURE 16 G'S (AT 40 G CAL.) 52 TD 500 HZ
WEIGHT	40 GRAMS

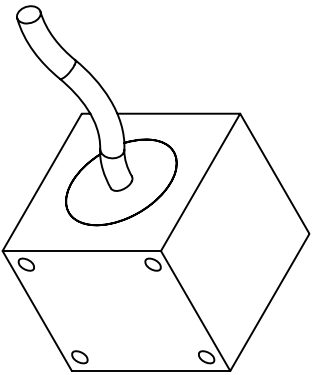
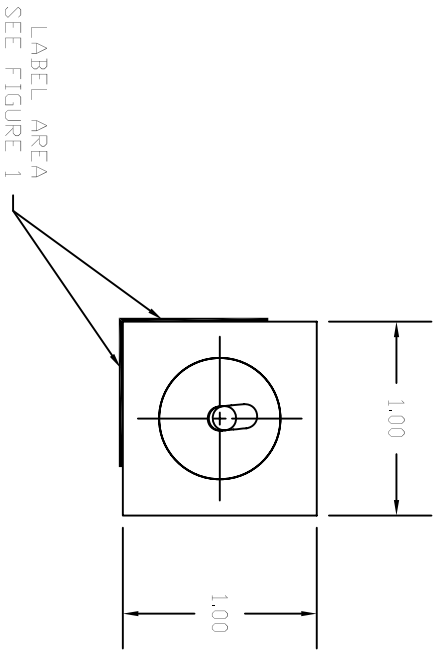


FIGURE 1

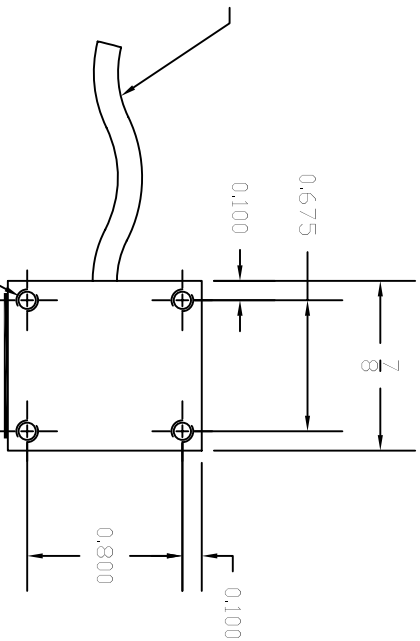


LABEL
P/N: A16456



MIL-W-16878D TYPE E,
MULTI CONDUCTOR BRAID
SHIELD CABLE, 24 AWG,
2 CONDUCTORS, LENGTH
AS REQUIRED

#4-40 TAPPED MTG. HOLES
5/32 DEEP MIN. (4 PLACES)



UNLESS OTHERWISE SPECIFIED:
BREAK ALL SHARP EDGES .010" X 45°
#64 MACHINE FINISH.
ALL DIMS. TO BE NET AFTER PLATING.
DIMENSIONS ARE IN INCHES.

TOLERANCES:
DEC .XX ±.010
DEC .XXX ±.005
FRAC ± 1/64
ANG ± 1°
DIA CONC ± .005

TITLE OUTLINE MODEL 3RO-928

MATERIAL

FINISH

INERTIA
SWITCH INC.
ORANGEBURG, N.Y.

REV	DESCRIPTION	DATE	CO. NO.	CHK'D	USED ON	NEXT ASSEM.	QTY	DRAWN	CHK'D	SCALE	DWG NO.	REV
					3RO-928		1	ATS	BD	1:1	A16966	
REVISIONS												

APPROV'D
BD 6/26/02