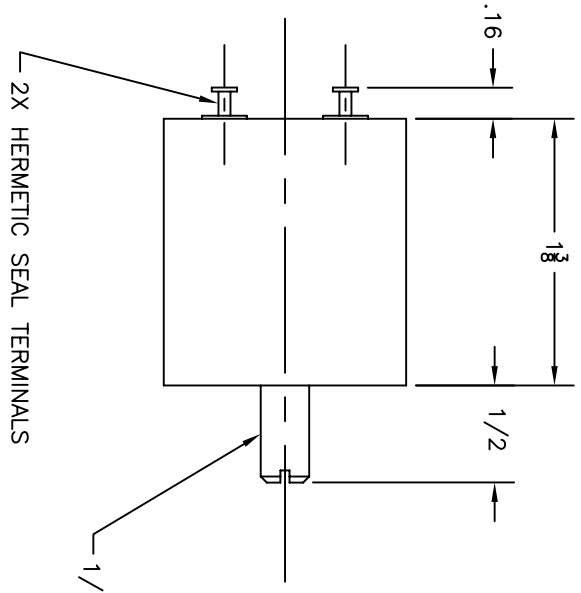
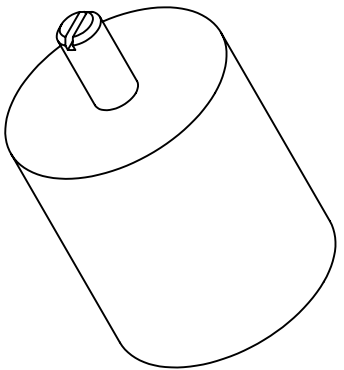
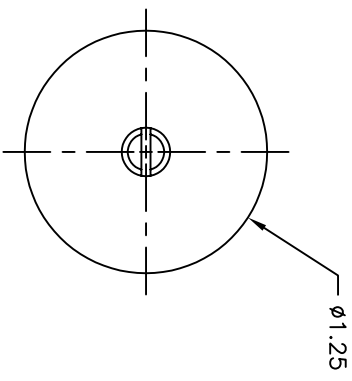


SPECIFICATIONS	
SENSITIVITY	OMNIDIRECTIONAL
CONTACTS	S.P.S.T. N.O., MOMENTARY
CURRENT	0.5 AMPERES @ 28 VDC
INSULATION RESISTANCE	200 MEGOHM MIN @ 500 VDC
ACCELERATION THRESHOLD	3G TO 25G ± 10%
RESET	AUTOMATIC ONCE G'S DECAY
OPERATING TEMPERATURE	-65°F TO +250°F
VIBRATION	WITHSTAND 10G FROM 5Hz TO 1000Hz
SHOCK	WITHSTAND 100G, 1/2 SINE WAVE, 10ms
DAMPING	SILICONE OIL
WEIGHT	90 GRAMS MAX



1/4-20 MOUNTING STUD



UNLESS OTHERWISE SPECIFIED:
 BREAK ALL SHARP EDGES .005" X 45°
 #64 MACHINE FINISH.
 ALL DIMS. TO BE MET AFTER PLATING.
 DIMENSIONS ARE IN INCHES.

TOLERANCES: XX ±.010
 DEC ±.005
 DEC ±.003
 DEC ±.001
 ANG ± 1/64
 DIA CONC ± .005

SYMBOLS:
 ● CRITICAL DIMENSION
 ▽ TEXT NOTE

HEAT TREAT
 DWG DB 12/10/03

SCALE 1:1

APPR V/D
 BD 10/12/04

C	Redrawn to MDT	8/2001	N/A	BD
B	Redrawn to MAC	1993	N/A	BD
A	Redrawn, Switch was in SQR Can	5/17/83	N/A	MF
REV	DESCRIPTION	DATE	CO. NO.	CHK'D

USED ON	NEXT ASSEM.	QTY
---------	-------------	-----

TITLE	OUTLINE MODEL 3R0-737
MATERIAL	
FINISH	

Inertial Switch
 INCORPORATED
 ORANGETBURG, NEW YORK
 CAGE CODE: 21928

DWG NO. A15124

REV C