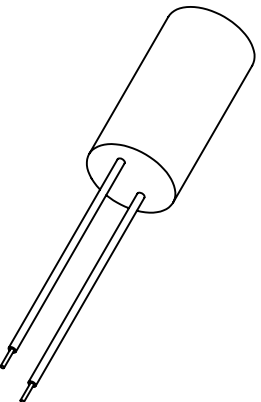
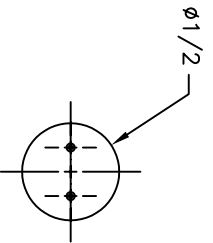
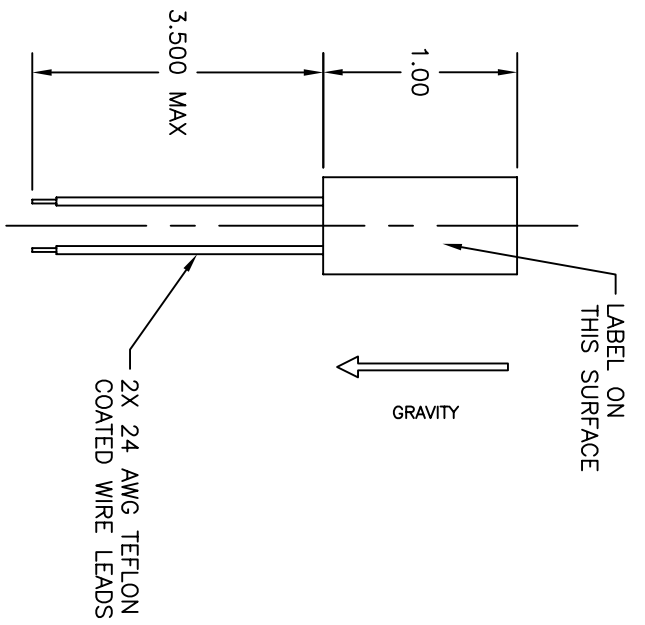


SPECIFICATIONS	
SENSITIVITY	UNIDIRECTIONAL
CONTACTS	S.P.S.T. N.C.
CONTACT RATING	.25 A @ 28 VDC
CONTACT RESISTANCE	LESS THAN 1 OHM
ACCELERATION THRESHOLD	.2G TO 20G ± 10%
OPERATING TEMPERATURE	-55°C TO +85°C
CONSTRUCTION	EPOXY SEALED



DIRECTION OF ACCELERATION
TO OPEN CONTACTS



UNLESS OTHERWISE SPECIFIED:
BREAK ALL SHARP EDGES .005" X 45°
#64 MACHINE FINISH.
ALL DIMS. TO BE MET AFTER PLATING.
DIMENSIONS ARE IN INCHES.

SYMBOLS:
● CRITICAL DIMENSION
◻ TEXT NOTE

TOLERANCES:
DEC .XX ±.010
DEC .XXX ±.005
DEC .1/64 ±.005
ANG ±.1°
DIA CONC. ±.005

FINISH

REV	DESCRIPTION	DATE	CO. NO.	CHK'D

USED ON 6UC-629

HEAT TREAT
DWN. AT'S 5/18/05

SCALE 1:1

REVISIONS

NEXT ASSEM.

QTY

CHK'D BY BD 5/19/05

APPR'D BY BD 5/19/05

DWG NO. A21719

ORANGEBURG, NEW YORK
CAGE CODE: 21928

INERTIAL SWITCH

INCORPORATED

REV