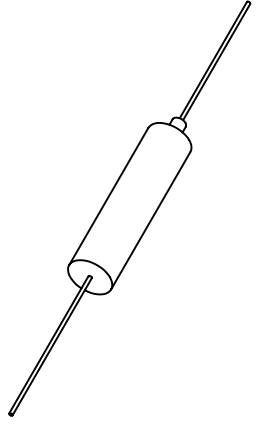
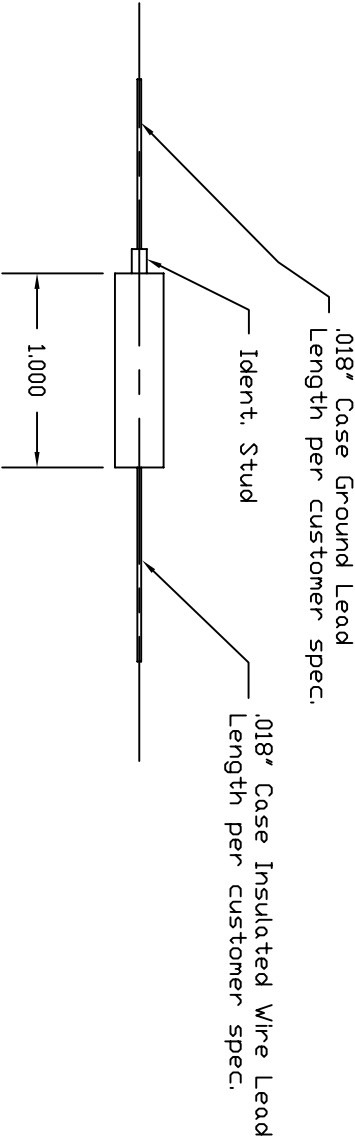
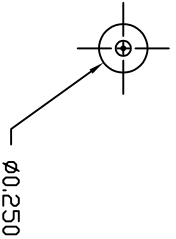


SPECIFICATIONS	UNIDIRECTIONAL, LATCHING
SENSITIVITY	10 to 3000 G'S
ACTUATE G LEVEL RANGE	10 to 3000 G'S
LATCH G LEVEL RANGE	10 to 3000 G'S
CONTACTS	S.P.S.T. N.D.
INSULATION RESISTANCE	1000 MEGOHMS @ 500 VDC
CONTACT RATING	2A @ 28 VDC
RESPONSE TIME	LESS THAN 5 MS
TEMPERATURE	-55 °C TO +125 °C
TERMINATION	WIRE LEADS



UNLESS OTHERWISE SPECIFIED: BREAK ALL SHARP EDGES .010" X 45° #64 MACHINE FINISH. ALL DIMS. TO BE MET AFTER PLATING. DIMENSIONS ARE IN INCHES. TOLERANCES: DEC .XXX ±.010 DEC .XXX ±.005 FRAC ± 1/64 ANG ± .005 DIA CONC ± .005		TITLE OUTLINE MODEL 6U0-920		FINISH		HEAT TREAT		SCALE		DWG NO.	
USED ON 6U0-920		NEXT ASSEM.		QTY 1		DWN. ATS		CHK'D BD		APPROV'D BD2/28/01	
INERTIA SWITCH INC. ORANGEBURG, N.Y.		REV B		REV B		REV B		REV B		REV B	

B	Changed Specifications	6/14/02	23679	BD
A	Added Ident. Stud / .018 was .020	9/5/01	23626	BD
REV	DESCRIPTION	DATE	CO. NO.	CHK'D
REVISIONS				