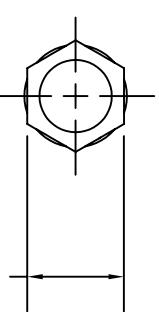
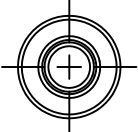
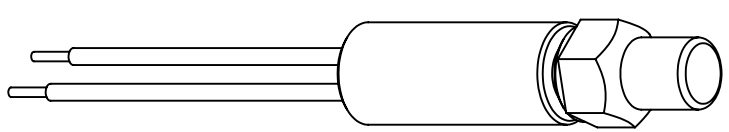
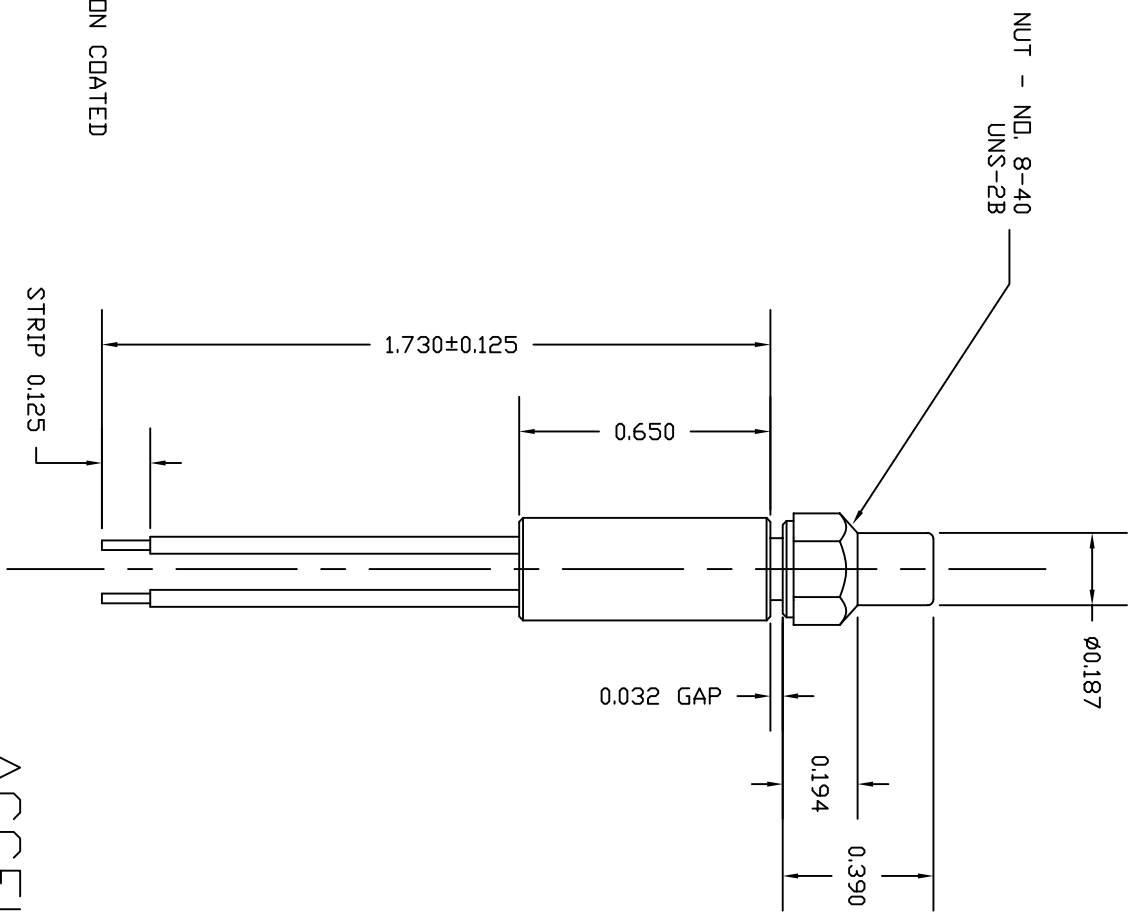
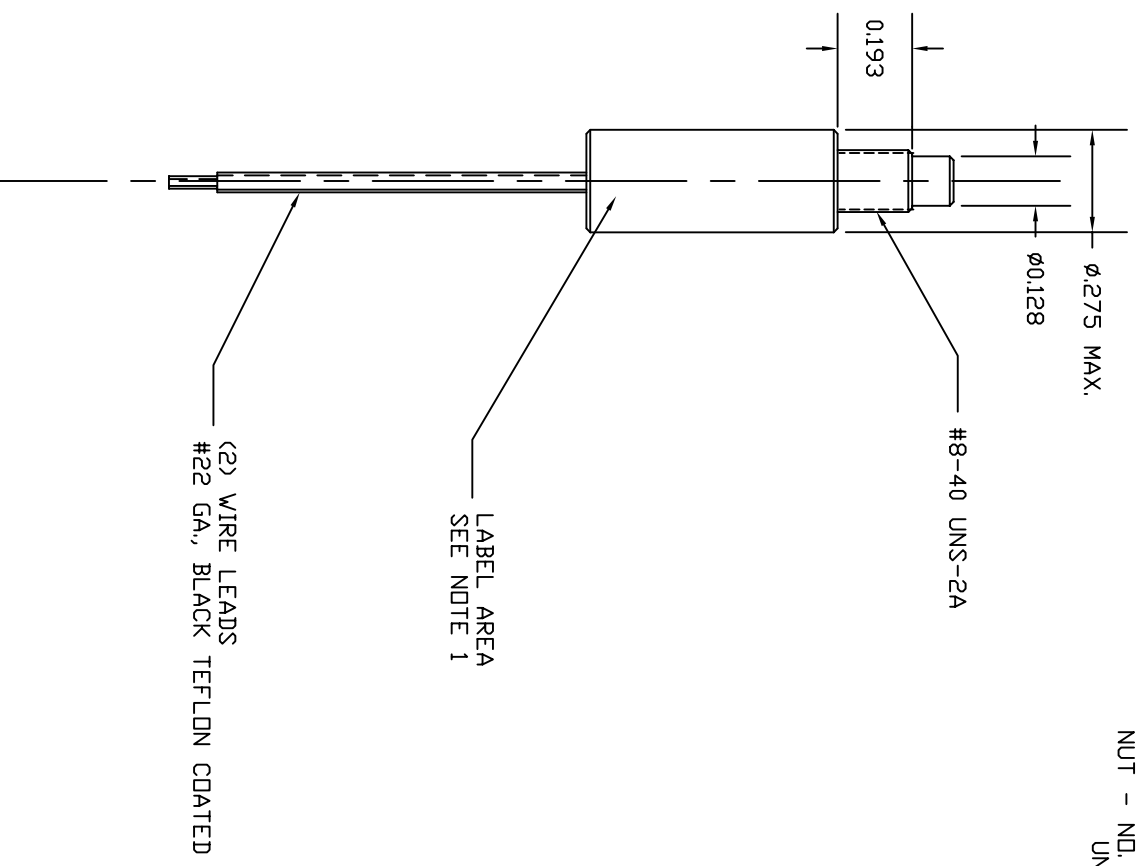


SPECIFICATIONS	
RANGE	25 TD 500 G
SENSITIVITY	UNIDIRECTIONAL
CONTACTS	SPST, N.D., MOMENTARY
CURRENT	1 AMP. @ 28 VDC
OPER. TEMP.	-54°C TD + 200°C
SHOCK	600 G, SAWTOOTH
INSULATION RES.	200 MEGOHMS MIN. @ 500 VDC
WEIGHT	4 GRAMS MAX.
QUALIFICATION STATUS	Military



NOTE 1:
LABEL SHOULD BE RIGHT SIDE UP WHEN WIRES
ARE FACING DOWNWARD.



ACCELERATION SWITCH

TITLE		OUTLINE 6U0-560 or 896	
MATERIAL			
FINISH			
HEAT TREAT		SCALE 2:1	
DWN. B.D.8/24/97		CHK'D N.R.	
APPR'D M.F.		DWG NO. B16466	
REV		REV	
DESCRIPTION		REVISIONS	
DATE		CO. NO.	
CHK'D		QTY	
USED ON		NEXT ASSEM.	
UNLESS OTHERWISE SPECIFIED: BREAK ALL SHARP EDGES. 0.10" X 45° ALL DIMS. TO BE MET AFTER PLATING. DIMENSIONS ARE IN INCHES TOLERANCES: XX ±.010 DEC .XXX ±.005 FRAC ± 1/64 ANG ± .005 DIA CONC ± .005			
INERTIA SWITCH INC. W. NYACK, N. Y.			