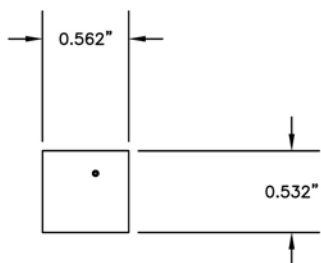


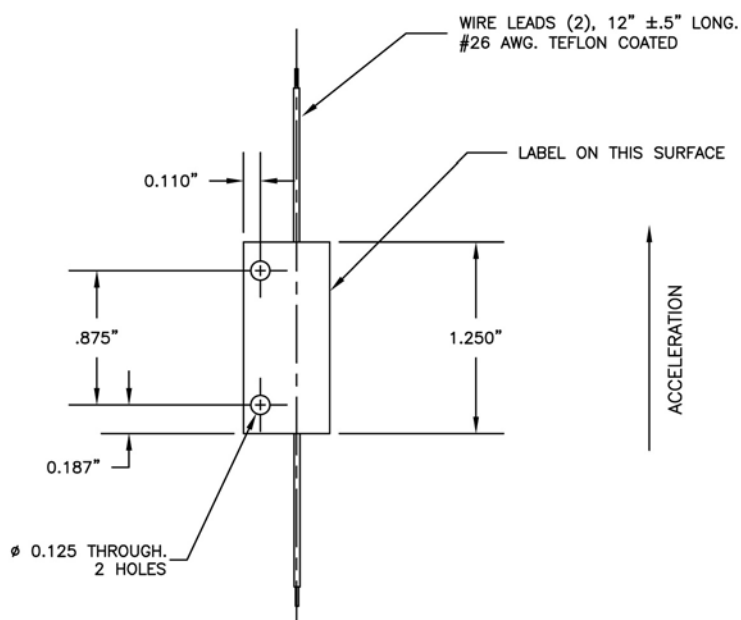
Launch Detector

Special Features:

- High Reliability & Accuracy
- Small & Lightweight
- Withstand High Vibe & Shock
- Qualified on Space Shuttle
- Contacts Hermetically Sealed
- Easy Installation
- Available Normally Open or Closed
- Multiple Poles Available
- Less than 200 Microsecond Bounce



SPECIFICATIONS	
SENSITIVITY	UNIDIRECTIONAL
CONTACT RESISTANCE	LESS THAN 0.5 OHMS
INSULATION RESISTANCE	500 MEGS MIN @ 500 V.D.C.
CONTACT RATING	3 WATTS MAX.
TEMP. OPERATING	-65°F TO +250°F
RESET TYPE	AUTOMATIC, BEFORE 1.1 G
CONSTRUCTION	EPOXY SEALED
ACCELERATION	STANDARD RANGE 1.5 - 2.5 G'S ±10%



The information on this data sheet is for reference only. Please verify all specifications by consulting our engineering department for the appropriate outline control drawing.