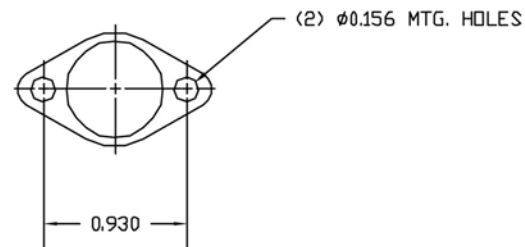


Special Features:

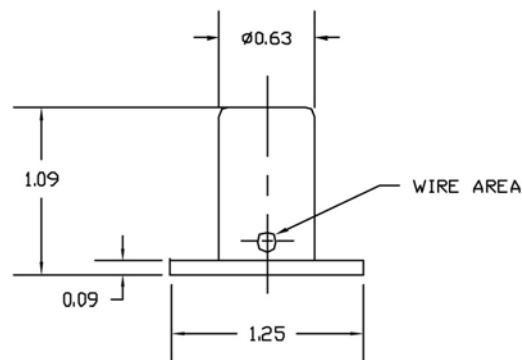
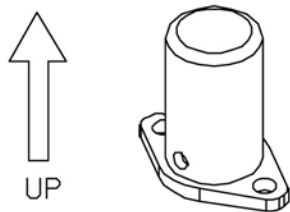
- High Reliability & Accuracy
- Small & Lightweight
- Available Latching
- Hermetically Sealed
- Gold Contacts
- Available Normally Open or Closed
- Multable Poles Available
- Available Damped or Undamped



SPECIFICATIONS	
SENSITIVITY	RADIAL (PLANAR)
ACCELERATION THRESHOLD	5 TO 7G'S
ENVIRONMENTAL	HERMETICALLY SEALED 1X10 ⁻⁶ cc/sec
CONTACTS	S.P.S.T. N.O. MOMENTARY
CONTACT RATING	2 AMPS
CONTACT RESISTANCE	LESS THAN 1.0 OHMS @ 10 mA
INSULATION RESISTANCE	100 MEGOHMS MIN @ 500 VDC
TERMINATION	WIRE LEADS 22 AWG TEFLON COATED
WEIGHT	25 GRAMS MAX



MOUNTING:
PLACE UNIT ON FLAT RIGID SURFACE IN
VEHICLE. SENSOR CAN BE ROTATED IN ANY
DIRECTION AS LONG AS THE BODY IS FACING
UP.



The information on this data sheet is for reference only. Please verify all specifications by consulting our engineering department for the appropriate outline control drawing.